

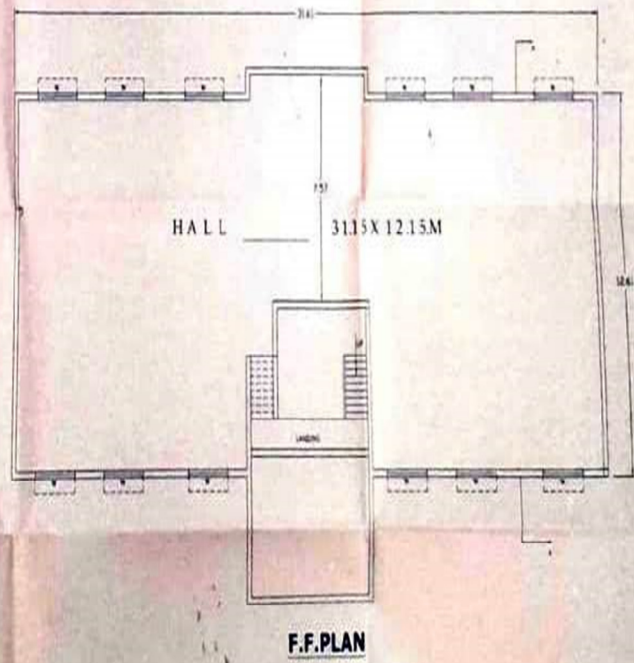
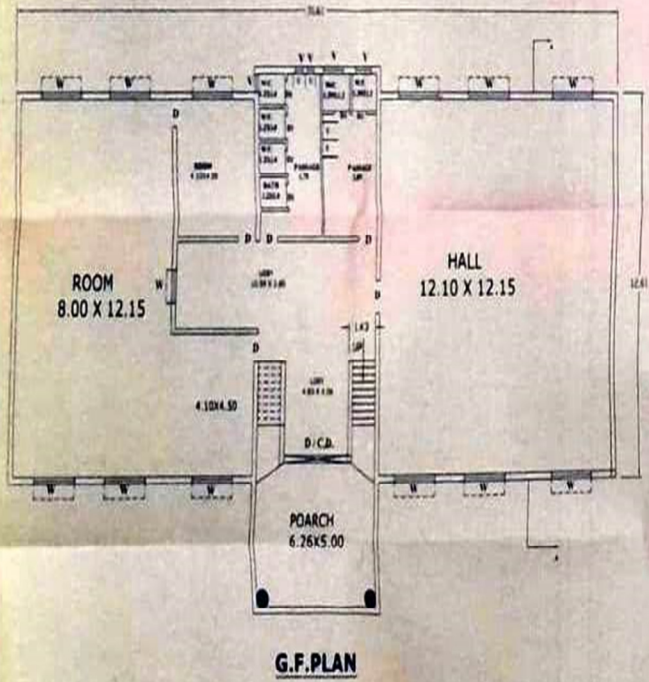
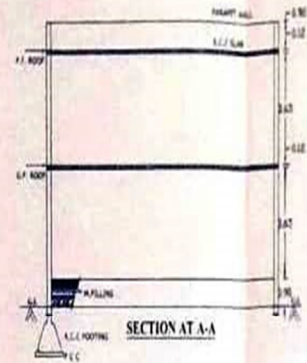
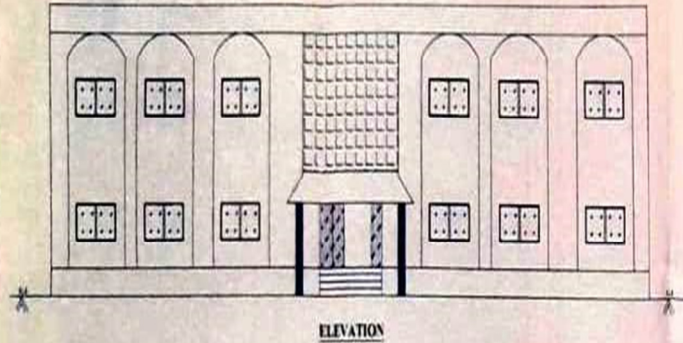
4.2 Library as a learning resource

The Library is housed in a magnificent building which includes separate wings for reference section, stack room, reading halls for boys, girls and staff, periodical section, computer laboratory, preservation unit, technical processing unit and circulation unit. The library supports the college rigorous programs in Graduate, Post-Graduate and Research. Library offers collection in multiple format contains **67732** commendably classified text books, rare books and reference books. Library provides various facilities and services such as circulation, display of new arrivals, news clipping, user orientation, bound volume circulation, inter library loan, career corner, reference services, OPAC & Web OPAC with internet facility. In order to conserve the printed heritage for future generation, the Library personal takes all efforts for physical, chemical, reprographic & digital conservation & preservation.

Library at a glance...

Collection	Total as on 31-03-2023
College Book Bank	42192
Student Book Bank	1546
Student Aid Fund	1709
UGC	1931
V.R. Shinde Study Centre	330
Dr. B.A. Study Centre	356
B. Voc (FP & WPT)	33
Competition Exam	143
General Books	18805
Xerox Books	282
Gratis Items	405
TOTAL COLLECTION	67732
CD/VCD	630
Bound Volumes	434
News Papers	9
e-books & e-Journals	N-List, NDL

Library Infrastructure



PLAN SHOWING EXISTING BUILDING B5 OF M.C. B.NILANGA

NEI
M. Y.
MILANGA

SANCTIONING AUTHORITY

OPENING SCHEDULE

D= DOOR'S 1.2X2.1 D1= DOOR'S .75X2.1
W= WINDOW'S .9X1.2 V= VENTILETER'S .40X.40

AREA STATEMENT

G F BUP AREA=396.60 SQM
F F BUP AREA=396.60 SQM
TOTAL BUP AREA=793.20 SQM

LEGENDS

PLOT BOUNDRY - BLACK
PROP WORK - RED
EXIST WORK - BLUE HATCHED
W SUPPLY - BLACK DOTTED
DRAIN LINE - RED DOTTED
EXIST WORK (TO BE DEMOLISHED) - YELLOW HATCHED

SIGN OF ARCHITECT

SIGN OF OWNER

PROJECT - EXISTING LABRARY BUILDING OF
MAHARASTRA MAHAVIDYALAY AT- NILANGA
DIST - LATUR

OWNER
MAHARASHTRA SHIKSHAN SAMITTEES
MAHARASTRA MAHAVIDYALAY AT- NILANGA
DIST - LATUR

DRAWING TITTEL SUBMISSION DRAW

ISSUED FOR - STA TUTORY APPROPAL
SCALE 1:100 (ALL DIMENSSION IN METER'S)

Library Building



Nilanga, Maharashtra, India
4QF3+W5R, Jadhav Nagar, Nilanga, Maharashtra 413521, India
Lat 18.124944°
Long 76.752772°

Librarian Cabin



Nilanga, Maharashtra, India
4QF3+W5R, Jadhav Nagar, Nilanga, Maharashtra 413521, India
Lat 18.124944°
Long 76.752772°

Main Stack



Nilanga, Maharashtra, India
4QF3+W5R, Jadhav Nagar, Nilanga, Maharashtra 413521, India
Lat 18.124944°
Long 76.752772°

Rare Books



Nilanga, Maharashtra, India
4QF3+W5R, Jadhav Nagar, Nilanga, Maharashtra 413521, India
Lat 18.124944°

Reference Section



Nilanga, Maharashtra, India
4QF3+W5R, Jadhav Nagar, Nilanga, Maharashtra 413521, India
Lat 18.124944°
Long 76.752772°

Staff Reading Room



E- Library



Boys Reading Room



Girls Reading Room